

# LOOK at LAKESIDE



Lakeside—Lester Park  
bi-monthly newsletter

## One Giant Shoe

The Conrad Service Station was located at 5310 E. Superior St (where Speedway is today) in 1934 for about 20 years. The station was run by the Conrad family from 1934 until 1953. Besides auto services the station had a few other things for locals and tourists to enjoy—a 'storybook' giant shoe, a little log cabin, and a miniature farm. In the 1950s, the Conrads built the Lakeside Motel beside the station at 5320 E. Superior. At that point the extra features were moved to a hotel area on the North Shore. Members of the family and community members worked at the hotel beside the gas station.



These postcards show extras that a local service station had for customers to enjoy.

After the Conrads owned the station it became **R & J's Service by 1955**, then **Lakeside Mileage Service Station by 1969**, then **Lakeside Fas Gas in the mid'70s** and **Food-N-Fuel in the early 1980s**. SuperAmerica was the new business in the 2000s and it currently is Speedway. These postcard photos were spotted while popping in at the Duluth Lakeside, Lester Park History Facebook Page (lakesidehistory) and more information was added based on the DNT archives of the Northlandia column.



## NEIGHBORS MOW

Neighbors have taken charge of mowing public spaces as the Parks and Rec staff has been reduced during COVID19 times. Jay St neighbors took care of Russell Square so kids could play. The west side of Washington Park is mowed by neighbors (Don't mow the newly planted wildflowers). I've heard of numerous neighbors mowing their neighbor's lawns as kind gestures. The mowing season is coming to an end but the dozen or so mowings throughout the summer season allowed more people to use the outdoor play areas and get some fresh air and activity.



## November 3

is the big day. Who will be next president ?

If you haven't voted absentee, then head to the polls between 7 AM and 8PM to place your vote. Safety measures are in place at the precincts—plastic shields, spacing, sanitizers. Wear a mask!

## IN THIS ISSUE

Meet a Neighbor:  
Jean

The Big Shoe

Crowd Hydrology

Veteran gets a ramp

Assorted news  
announcements

**Next Deadline**  
**Nov 14**  
**Please Submit Ads & News by the deadline**

LOOK AT LAKESIDE is a bi-monthly newsletter on people, places, happenings and history of Lakeside-Lester Park, Duluth, MN  
6 issues/year  
First issue Aug/Sept 2012  
Wendy Grethen, editor  
Terry Brown, assistant  
218.525.5098

Subscriptions \$12  
**Want to Advertise?**  
Ad Rates and Deadlines at  
[www.LookAtLakeside.com](http://www.LookAtLakeside.com)  
**YOU CAN READ THIS ONLINE IN COLOR.**

Ads and subscriptions help support this community project and are appreciated.  
[www.WENDYUPNORTH.COM](http://www.WENDYUPNORTH.COM)

AVAILABLE FOR LOCAL HISTORY PRESENTATIONS, TRAVEL TALKS, DULCIMER MUSIC LOCAL ART & GIFT FAIRS \* DAY TRIPS/UP NORTH EXCURSIONS DULCIMER SHOP/LESSONS JOIN MY COMMUNITY EMAIL LISTS AND FACEBOOK PAGES. WENDYUPNORTH@YAHOO.COM

### McCulloch Street Musings from the Editor

FINDING NEW WAYS to do things has stretched into a creative endeavor. Drive-thru Job Fair and events, outdoor movies/drive-in, more outdoor eating, and other new ways have been in effect. Have you been cooking more during COVID-19 times? Eating together with family more often? The cooler weather is a good time to bake—zucchini bread, pumpkin bars, hearty soups, or even make your own applesauce. Please share a favorite recipe for a future issue. What will you cook or eat at the Christmas holiday?

This issue has information on some virtual events and outdoor

events. I also have added an Alpaca Farm Tour date for Look at Lakeside readers. You'll also learn more about the diet of bats thanks to local research.

Bring out your gloves and hats if you haven't already. Wearing masks indoors and in public places continues. How many masks are in your collection? I have a variety in my collection.

Keep well.  
Be a good neighbor.  
Check in with folks.

Your neighbor, Wendy

### BUILDING NEWS

The Lakeside Early Learning Center will now run the school independent of St. Michael's Catholic Church and as of Sept 14 owns the building at 4628 Pitt St. Over 50 students are enrolled.

Zvago Lake Superior new residents are moving in this fall. The 51 home co-op next to Ecumen Lakeshore has the requirement of residents being over the age of 62.

Daylight Savings Time ends Nov. 1. Set your clocks back.

**Wendy Up North Local Art & Gift Fairs are on hold due to safety restrictions for COVID-19.**

FOR LOOK AT LAKESIDE READERS

### Alpaca Farm Tour

Oct 10  
10 a.m.



\$10 per person

Advanced Registration required.

Limited to 8 participants. Mask required. All outdoors. We will meet at the parking lot next to the Lakewalk by Duluth East (lower) and caravan from there.

525-5098. [wendyupnorth.com](http://wendyupnorth.com)

### Beekeepers Press

Kathleen M. Cargill, M.A.

author of genealogy & history books

creator of gorgeous pillow cases



Duluth, MN  
218.525.7496  
[kmcargill6@gmail.com](mailto:kmcargill6@gmail.com)

## Look at Lakeside Subscription \$12

6 issues/year Your support is appreciated

Date \_\_\_\_\_ Name \_\_\_\_\_

Address \_\_\_\_\_ Phone \_\_\_\_\_

Renewing? *U-betcha Nope, I'm new* Years in Lakeside \_\_\_\_\_

Mail to Look at Lakeside, 4005 McCulloch St., Duluth MN 55804 THANK YOU!  
Pay by PayPal if you wish. Email [wendyupnorth@gmail.com](mailto:wendyupnorth@gmail.com) or go online.

**If you don't want to cut this slip out—just submit your name and info on a piece of paper.**

### Thank you New & Returning subscribers

- K. H. New Prague
- J.M. , Norwood St
- J.M, Gladstone St
- S.O., Cambridge St
- M.P., Otsego St
- J&C Y, Otsego St.
- S. R., Juniata St
- D.F, Hudson Blvd
- J.D., Oakdale, MN

# Full Moon Hikes

Oct 31 at Lester Park 5:30 p.m.

Nov 30 4:30-5:30 p.m.

\$3 per person. Register in advance.

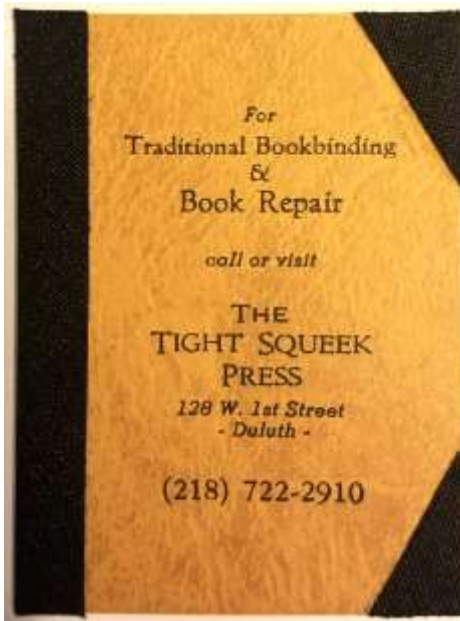
[www.duluthmn.gov/parks/register](http://www.duluthmn.gov/parks/register) or call 730-4306

# Glenwood/Snively Roundabout

Roundabouts help with transportation flow and safety. Professionals have been working on the best long-term traffic solution. Construction would begin in June 2022. During construction detours will be in place to navigate through Lakeside to reach destinations. <https://glenwood-snively-wsbeng.hub.arcgis.com/> On the web you can enter suggestions and concerns or call Steve Krasaway with St. Louis County Public Works at 625-3841. A recording of the August 13 virtual presentation with slides and animations and Q&A are also online—a joint project with St. Louis County and the City of Duluth.

## DID YA' KNOW?

**Gabriel's Book Store**, next to St. Michael's Church, gives a free book per visit for every child birth to high school graduation. Students and teachers get 20% off purchases (excludes bag sale days).



## Crescent Moon

A local zoom Dark Sky program recently pointed out the crescent moon and even artwork



of the chalice of the crescent moon drawn by DaVinci. What is within the chalice?

## Full Moon Dates

Oct 1, Oct 31, Nov 30

# Story Strolls

Read a picture book and stroll. Friday, **October 16** at Lester Park (61st Ave East & Superior St) 9:30-11:30. *Animal Action ABC* by Karen Pandell

Saturday, **November 7** at Washington Square, 4215 E. Superior St. *Moo!* By David LaRochelle. Other dates for other locations and other books. More information at [www.duluthlibrary.org](http://www.duluthlibrary.org)

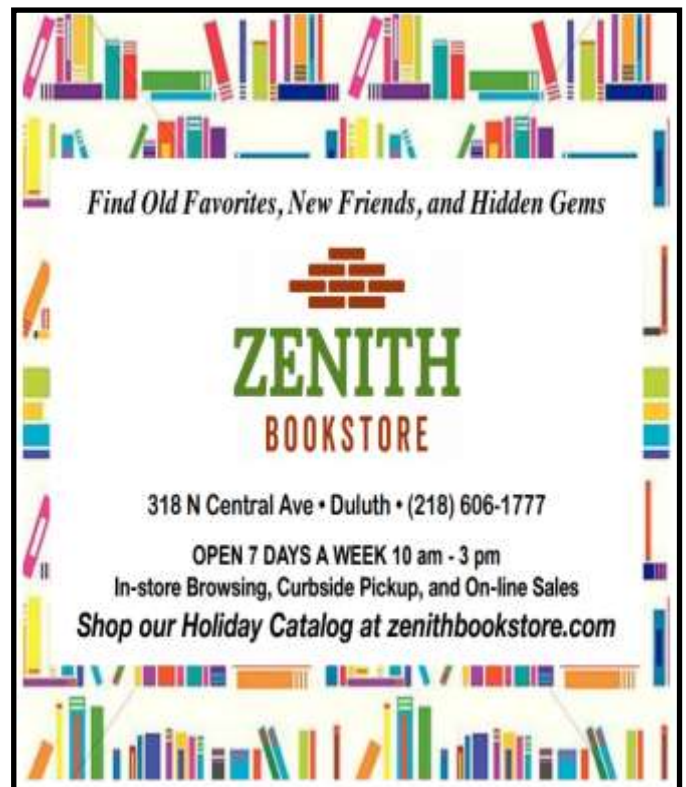
## Like Poetry?

*Listen and/or Participate*

# 2nd Sunday Reading Series

3-4 p.m. Offered through Zoom. Email [gboelhower@msn.com](mailto:gboelhower@msn.com) FMI [www.duluthpoetlaureate.org](http://www.duluthpoetlaureate.org)

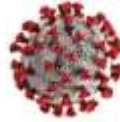
Lester Park Elementary School Foundation is asking for book donations. Bring books to the school office. Books should be k-5 level reading books, especially chapter books for 4th and 5th grade. The school will create a Free Book Store where students get to take a book or 2 home.





### Helping People Stay in their Home

Art moved to Lakeside about a year ago. He's retired from the Marine Corps after serving 21 years. He is 100% disabled and within 3 months after a request this summer a crew came over and built a ramp for him. Funding was through the veteran's administration. The ramp is made of aluminum.



MN Dept of Health COVID-19 Hotline  
651-297-1304.  
[www.cdc.gov/](http://www.cdc.gov/)  
or [www.mn.gov/](http://www.mn.gov/)

**COVID19** (as of 9/21)  
Known cases (actual is likely higher)  
..in St. Louis County 1,352  
..in Minnesota 90,942  
Deaths ..in St. Louis County 34  
.. in Minnesota 2,021  
.. in the U.S. 204,208  
..in the world 966,354

Online Living Well with Chronic Pain class at [yourjuniper.org](http://yourjuniper.org) or call 855-215-2174.

**Lakeside Presbyterian Church**  
4430 McCulloch Street, Duluth, MN 55804  
218-525-1967

Sunday Worship begins at 10:30 a.m.

Check website for where worship will be each week: In-person Indoors, CE Lawn, or Online

[www.lakesidepreschurch.org](http://www.lakesidepreschurch.org)





Sutherland CBD products include:  
• Oils • Topicals  
• Edibles • Capsules  
• Dog treats • Vapes

**FREE SHIPPING ON ALL ONLINE ORDERS!**  
[SutherlandCBD.com](http://SutherlandCBD.com)  
Tue-Sat 10am-6pm

4431 E Superior St, (218) 464-1002 **FIND US ON FACEBOOK**

**COVID-19 CLEANING SPECIAL**

**\$299**

**Electrostatic Disinfecting Treatment**

for any home or business 3000 square feet or less

**218-45CLEAN**

**StaticCleanDuluth.com**

Give your employees and customers peace of mind using electrostatic technology to effectively combat COVID-19.

### Job Posting

Looking for a rewarding part-time or full-time job? Take a look at DRCC, a Star Tribune top Work Place for the last 4 years, supporting individuals with disabilities, located in Duluth as well as Proctor, Pike Lake, Hermantown, Two Harbors, Cloquet and Esko and the Range Cities. We are looking for individuals that are interested in supporting, teaching, and of course, having fun! NEW WAGE of \$13.50/hour. Full-time positions have a generous benefit package. What you can expect:

- In-depth training that is paid work time
- Continuous support and education
- An opportunity to share your talents and interests
- Tuition Reimbursement Program for Students
- Predictable/consistent hours each week

For additional information, check us out on Facebook or our website, [drccinfo.org](http://drccinfo.org), or call Michelle Hooey at 218-722-8180, ext. 101.

## What Local Bats Eat

Miranda Galey recently finished her Masters thesis at the University of Minnesota Duluth through the Natural Resources Research Institute (NRRI) in late August. She worked with Minnesota bats and analyzed their diet. She collected and prepared samples from 360 fecal pellets. She identified the insects by cross referencing the DNA sequences with the Barcode of Life Database which has ~6 million DNA barcode



sequences from some 550,000 species. She then could map which insects and how many were consumed by Minnesota bats.

### Her discoveries:

- bats ate 17 species of mosquitos, five of which can spread diseases to humans.
- the Northern Long-Eared bats were the most voracious mosquito consumers.
- Minnesota bats ate ~25 species of invasive forest pests, like the spruce bud worm, pitch-eating weevil, and saddlebacked looper.

-The study also identified nine pest species that had not been previously recorded in Minnesota.  
- The bats she studied ate 535 different species of insects, including some non-flying arthropods like spiders.

How might the diet change in different climate change scenarios? How will bats react to warming temperatures in the environment? Miranda is eager to learn more.

Learn about NRRI projects by Liking their Facebook page.

## Three Sisters

On Lake Superior when a series of three large waves form, the phenomenon called "Three Sisters" is said to take place. The second wave hits the ship's deck before the first wave clears. The third incoming wave adds to the two accumulated backwashes and suddenly overloads the ship deck with tons of water.

Multiple shipwrecks have occurred due to this, especially during the big storm in 1905, known as the [Mataafa storm](#). Twenty-nine ships were lost on Lake Superior. The Split Rock Lighthouse was built in response to the loss of lives and ships from that storm.

Attend City of Duluth city meetings virtually at [www.duluthmn.gov/live-meeting](http://www.duluthmn.gov/live-meeting)



### Jen Schultz, DFL Candidate for Re-election, MN House District 7A

#### An Economist for the People

- ◆ Only health economist in the state legislature
- ◆ Championed licensure of assisted living facilities

#### A Trusted and Experienced Leader

- ◆ Committees: Long-Term Care (Chair), Health and Human Services Finance, Health and Human Services Policy, Rules and Legislative Administration, Tax, Great Lakes Commission
- ◆ Working on education, transportation, environmental protection, affordable health care, economic and social justice, affordable housing

#### Endorsed by, among others

- ◆ DFL, Northeast Area Labor Council, AFSCME Council 5, MAPE, Planned Parenthood, DFL Environmental Caucus, Conservation Minnesota Voter Center, Sierra Club, Education MN, womenwinning, MN Nurses Association

#### Please vote for Jen Schultz for MN House 7A

- ◆ On Tuesday, November 3, 2020, or
- ◆ In person, at Duluth City Hall, Central Lobby, September 18 - November 2, or
- ◆ By Absentee Ballot, [DFL.org/vbm](http://DFL.org/vbm)
- ◆ To find your polling place, go to: <https://pollfinder.sos.state.mn.us/>

For more information, visit [SchultzForMNRep.com](http://SchultzForMNRep.com)

The **Friends of the Lakewalk** annual meeting will be **October 15** at 6:30 p.m. through zoom. The speaker will be Matt Andrews, Trails coordinator, Restoration Progress and Brighton Beach trail plans. Call 728-3535 or email [fotduluth@gmail.com](mailto:fotduluth@gmail.com) for more information.

### Purchases Support Organizations/Businesses

Many local fundraisers were not able to happen this year. With reduced events this fall contributions will again be limited. You can support places directly with donations and with purchases. The LAL editor has bought boxes of Who Gives a Crap toilet paper (bamboo and 100% recycle paper) which supports building toilets in places that need them. Buy **Fudge**—Douglas Co. Humane Society 1-715-398-6784 **Nuts and Spreadable Cheese**—Altrusa 525-5098 **Popcorn**—local boy scouts

### FOOD RESOURCES UnitedWay211

**Ruby's Pantry** is a food share program. Pay \$20 and receive much more in groceries. Third Thursday at the Copertop and additional locations and dates, 651.674.0009 for more info.

## Youth Scholarship

The Mike Colalillo Medal of Honor Scholarship Fund is open to high school seniors and college students with a physical connection to St. Louis Co. A 4-10 page research paper on a topic relevant to veterans of St. Louis Co. is part of the material, besides the application, to be submitted. FMO go to [dsacommunityfoundation.org](http://dsacommunityfoundation.org). **Deadline is November 12.**

## Hawk Ridge Notes

Aug 24 was a peak day for **Common Nighthawks** migrating through. Over 27,000 were spotted.

As of Sept 20 over 31,000 **broad-winged hawks** have passed overhead.



Vultures, Eagles, Blue Jays, Osprey, Harriers, Sharp-shinned Hawks, Northern Goshawks and more are party of the birds passing through—and many warblers, too. Heading south.

## IN THE far, far distant PAST

There are >5,000 known species of dragonflies.

Some scientist theorize that high oxygen levels during the Paleozoic era (~300 million years ago) allowed dragonflies to grow to monster size. Some had a wingspread of up to 30".



**DELUXE**  
INSURANCE GROUP

4515 E. Superior Street  
(218) 525-7118

**Compare your *home, auto or business* insurance  
with over 15 companies INSTANTLY!!**

Quote yourself on our new website

[www.deluxeinsuranceduluth.com](http://www.deluxeinsuranceduluth.com)

**Come in and see us or call today!**



# Meet a Neighbor Jean Marquette

Jean Marquette grew up in southwest MN, near Ivanhoe, the storybook town. She attended school in a brick one-room school house. She is one of 9 children, including a twin sister Jane. Scholarships for St. Mary's School of Nursing in Minneapolis directed her career path. Her husband Will went to school nearby and studied pharmacy. They married in 1965 and have one daughter.

In 1968 there was a swamp across the street and turtles and ducks were often seen. Today it is all developed. The neighborhood is a great place to raise a family. She frequents the walking trails nearby in the woods. She has had many of the same great neighbors over the years.

Jean and Will both worked at St. Marys. After a few years Jean changed to teaching at DAVTI, now called Lake Superior College,

teaching in the classroom and clinical sites. A car accident in 1998 ended her 28-year career of teaching.

She has volunteered over the years helping family and friends. She enjoys traveling and Alaska was their last big trip.

In August, Jean played "You are My Sunshine" on her dulcimer at her grandson's wedding as her grandson sang along. She digs gardening and shares the harvest with neighbors. She has

fun baking, cooking, and entertaining. She is known for her sourdough wild rice bread, which she shares with many. She belongs to St. Michaels Book club and loves to read a good book. For many years she and her husband enjoyed



*Jean has lived in Lester Park neighborhood for 55 years. She also practices QiGong daily and is known for her sourdough wild rice bread.*

sailing on Lake Superior, including the challenging Wednesday night races. The Apostle Islands, Bayfield, and Cornucopia were a summer adventure.

Developing chemical sensitivities has encouraged her to teach others about their dangers. She continues to be treated for chemical sensitivity and

appreciates people who use scent-free products.

Jean is an all-round super nice person who shares her kindness and laughter to her family, neighbors and friends.

—Look At Lakeside

Jean has gone door to door with flyers and discussion about chemicals used on lawns. People and dogs are at risk. Scented laundry soaps and softeners can negatively impact people and the environment. Buy unscented or use wool dryer balls. **Be aware that scents may impact others.**



**MURRAY E KEOGAN**  
MURRAY E KEOGAN AGENCY

1131 E. 4th St.  
Duluth MN 55805

Office: 218-525-6688  
Fax: 218-525-0730  
E-mail: mkeogan@amfam.com  
1-800-MYAMFAM (800-692-6326)

## MARSHALL HARDWARE

"They've got everything!"

---

*In your friendly Lakeside neighborhood*

**4415 East Superior Street • 525-3638**

DONNA BERGSTROM  
FOR MN STATE SENATE - 7



- \* Donna is a retired LtCol in the United States Marine Corps
- \* Donna is your neighbor on McCulloch Street
- \* Donna is the Right Voice, Right Now
- \* Learn more about Donna's broad and diverse background at [www.dbergstrom.com](http://www.dbergstrom.com)
- \* Vote for Donna!

**PS: Donna would be the first American Indian woman to serve in the MN State Senate.  
Let's make history Duluth!**



The Look at Lakeside newsletter editor took this photo below the Lester River bridge (London Rd) while swimming up the mouth of the river in August. The water temperature was about 10 degrees warmer than Lake Superior. A duck swam by at eye level.



imagined by Freepik

### Crowd Hydrology AMITY #1015

In an effort to obtain data on our many streams, several sites have measurement opportunities for the general public to gather and submit information. The collected information is then automatically pooled and shared. Amity Creek, just above the gazebo, has a measuring stick in the water in view. It's one of 15 sites in the Twin Ports. Text the station # and water height to the phone numbers listed on the gauge sign located on the stream bank. Over 35 data points have been submitted by citizens for this location over time. Go to [lakesuperiorstreams.org](http://lakesuperiorstreams.org) and put it Crowd Hydrology to view the graphs of the data collected over time. Give it a shot and submit your own information by visiting the location. [Crowdhydrology.com](http://Crowdhydrology.com) shows locations US wide.



**Brighton Beach Notes**  
The Duluth city council approved \$4.5M for improvements at Brighton Beach and the ongoing Lakewalk project.

**Coming Soon**  
**Look at Lakeside tshirts**—short-sleeve or long-sleeve. White or black shirts. Interested in one or more? Pre-order today. 525-5098



**ECUMEN® Lakeshore**  
A SUPERIOR WAY OF LIFE

- The Crest  
INDEPENDENT LIVING
- The Shores  
ASSISTED LIVING & MEMORY CARE
- The Fountains  
SHORT-TERM REHAB
- Ecumen Home Care - Lakeshore  
IN-HOME CARE SERVICES
- Medical Transportation  
(218) 625-4800
- Home Delivered Meals  
(218) 625-7844

4002 London Road, Duluth, MN 55804 | (218) 625-7100 | [lakeshoreliving.org](http://lakeshoreliving.org)

 **5631 E. Superior Street  
Duluth, MN 55804  
(218) 525-1736**  
Hours:  
Mon.-Sat. 8AM-9PM  
Sunday 11AM-6PM

**Now available: PULL TABS**  
ATM ON SITE **\$1 - \$2 - \$3 Boxes**  
Benefiting the Irving Community Club

**GREAT SELECTION - GREAT SERVICE - GREAT PRICES**

### Lakeland Shores Apartments



**46 Units • Affordable Senior Housing  
Market Rate and Section 8 welcome**

Independent Housing  
11 Studio/35 One bedroom Apts.  
Utilities included & Cable TV, Security,  
Dining/Activity Room, Laundry Room

Located near Churches, Hardware &  
Grocery Store, Medical & Dental Offices,  
Banks, Post Office in a quiet neighborhood



**4500 Cambridge Street, Duluth 218-525-3468**